

Nal-Scintillation Probe 2002

with photomultiplier for the detection of β - and γ -radiation

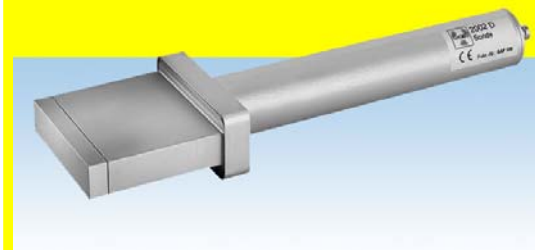


- high sensitivity
- large detector surface
- application fields:
 - nuclear medicine
 - environmental and scrap monitoring
 - security controls
 - (police, customs, border authorities, factory inspectorates)
- by means of a probe cable connectible to the dose rate meters GRAETZ **X5C plus** and **GammaTwin S** (identified as pulse probe) and to the contamination monitor **CoMo 170**
- power supply from the basic unit

Technical Data

Type of radiation:	β , γ
Energy range:	γ -radiation and X-rays: 25 keV – 2 MeV β -radiation: >100 keV
Detector:	(70 x 70 x 13) mm NaI (TI)-scintillator with photo multiplier
Reference orientation:	vertical onto the square surface
Position of the detector:	middle of the detector cap
Reference point:	middle of the square surface
Background count rate*:	approx. 100 cps
Range of relative humidity:	0 up to 90%, no influence
Range of outside air pressure:	600 up to 1300 hPa, influence negligible
Indication ranges:	0 – 200 cps 200 – 2000 cps 2 – 20 kcps (20 kcps \cong 13 μ Sv/h referred to Cs 137)
Temperature range:	operation: -20 °C up to +50 °C storage: -30 °C up to +60 °C (NOTE: max. temperature change 10 °C/h)
Overload capacity:	up to approx. 3 mSv/h (referred to Cs 137)
After effect:	after exposure to radiation of 3 mSv/h, error after 20 minutes is approx. 5%
Voltage supply:	+5V from the basic unit
Housing:	aluminium, partly anodically oxidized, protection class IP 65 (hose-proof)
Dimensions / Weight:	(80 x 85 x 35) mm with 200 mm handle (\varnothing 33 mm) 530 g

* at 0,1 μ Sv/h



GRAETZ Strahlungsmeßtechnik GmbH
 Westiger Straße 172 · 58762 Altena / Germany
 P.O. Box 81 00 · 58754 Altena / Germany
 Phone +49 2352 7007-0 · Fax +49 2352 7007-10
 E-Mail: info@graetz.com
 Website: www.graetz.com

04/2013
subject to
technical change